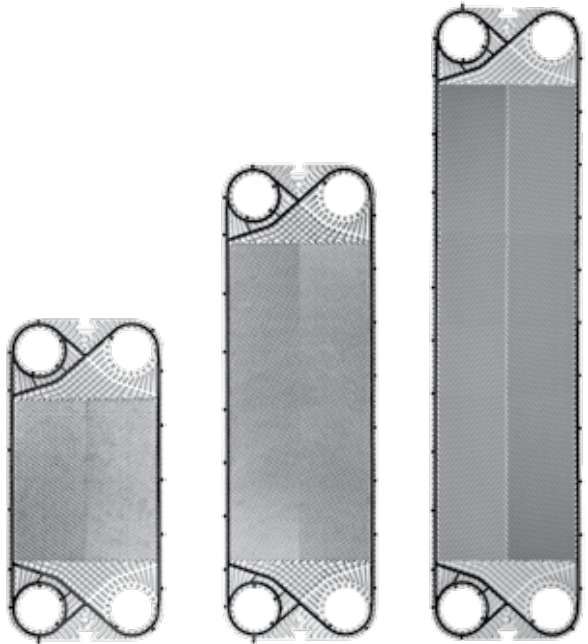




PRODUCT RANGE DN 100+

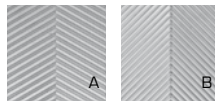
STANDARD OR CUSTOMIZED





Product Range	P300+			P450+			P700+		
Exchange area [m ²]	0,268			0,482			0,697		
Width [mm]	425			425			425		
Height [mm]	877			1322			1767		
Connections diameter	DN100 4"			DN100 4"			DN100 4"		
Channel capacity [l]	0,766			1,217			1,669		
Tightening quote [mm]	3,1			3,1			3,1		
Plate weight (with gasket) [Kg]	1,42			2,21			3,02		
Corrugation angle	A/B			A/B			A/B		
Max. water flowrate [m ³ /h]	240			240			240		
PS=> Max working pressure [bar]	10	16	25	10	16	25	10	16	

Ex art. 3.3 D.Lgs. 93 of 25/02/2000 in accordance with Directive 97/23/CE.
Announced pressures are referred to AISI 316L plates.



Plates are available in two thermal lengths (A/B)

DN32

DN50

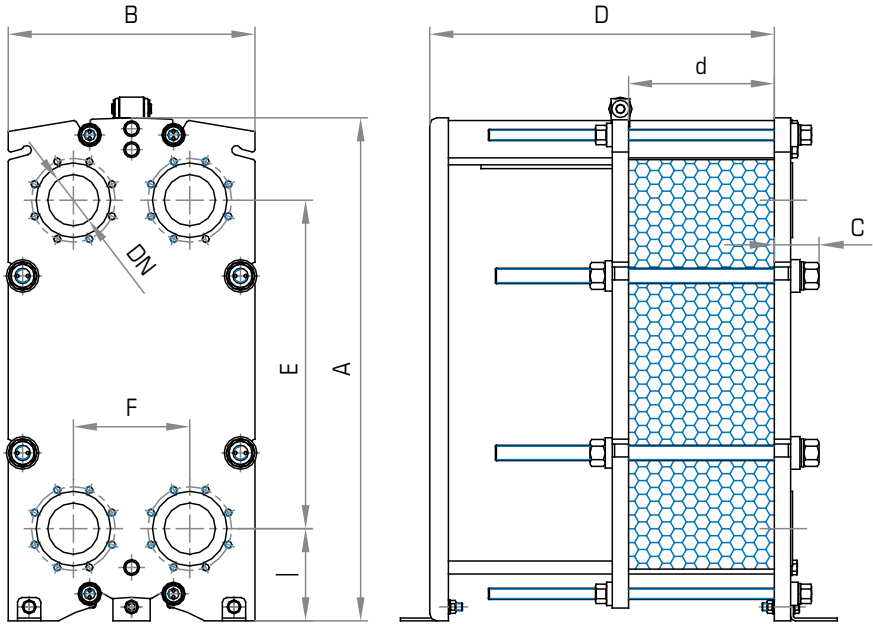
DN65

DN100

DN150

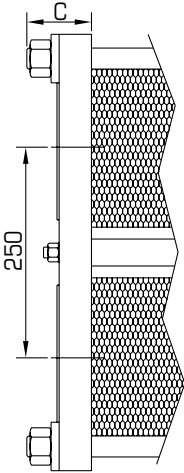
DN200

Frames dimensions



	S300+				S450+				S700			
A	1080				1525				1970			
B	530				530				530			
E	705				1150				1595			
F	250				250				250			
l	198				198				198			
Np max	101	201	301	401	101	201	301	401	101	201	301	401
D max	740	1240	1740	2240	750	1250	1750	2250	750	1250	1750	2250
d (A-A)	3,1 x Np				3,1 x Np				3,1 x Np			
DN	DN100 4"				DN100 4"				DN100 4"			
A-A B-B C-C E-E U-U V-V	PS10	PS16	PS25		PS10	PS16	PS25		PS10	PS16		
	96	101	111		96	101	111		96	101		
A-A B-B C-C E-E	Cl	4			Cl	4			Cl	4		
U-U V-V	Cl	0			Cl	0			Cl	0		

All dimensions are in mm - Np = number of plates



A-A

Studded ports
Rubber lining
EN 1092-1

B-B

Studded ports
AISI 316 lining
EN 1092-1

U-U

Studded ports
Unlined
EN 1092-1.

C-C

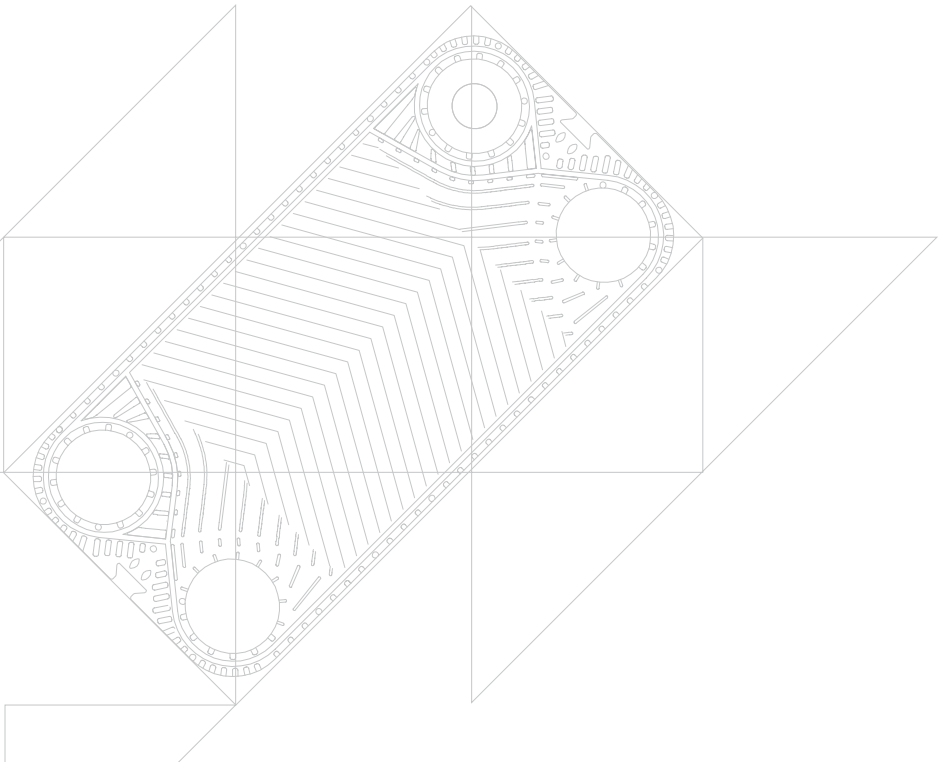
Studded ports
Rubber lining
ANSI
(metric thread).

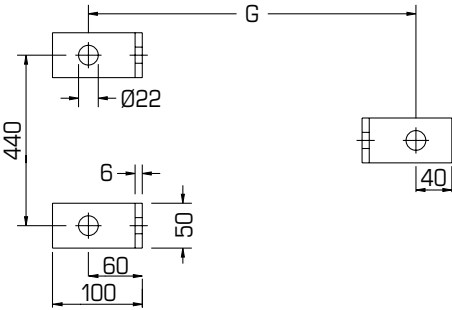
E-E

Studded ports
AISI 316 lining
ANSI
(metric thread).

V-V

Studded ports
Unlined
ANSI
(metric thread).





GxH	PS10	PS16	PS25
S300+			
Max 101p	858	863	873
Max 201p	1358	1363	1373
Max 301p	1858	1863	1873
Max 401p	2358	2363	2373
GxH	PS10	PS16	PS25
S450+ / S700+			
Max 101p	861	866	876
Max 201p	1361	1366	1376
Max 301p	1861	1866	1876
Max 401p	2361	2366	2376

Materials

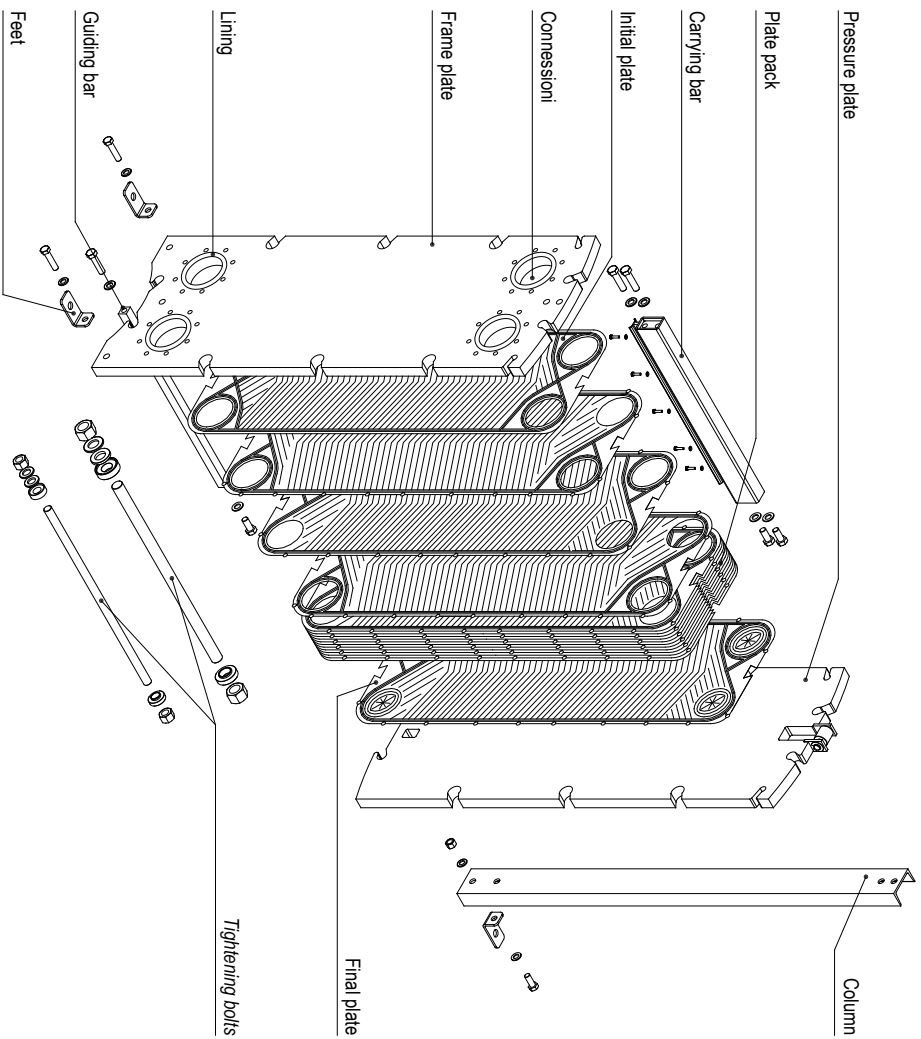
		S300+	S450+	S700+
Plates	AISI 304	●	●	●
	AISI 316L	●	●	●
	254 SMO	●	●	●
	Titanium	●	●	●
Gaskets	NBR	●	●	●
	EPDM Prx.	●	●	●
	FPM	●	●	●
	HNBR	●	●	●
Frames	Carbon steel	●	●	●
	AISI 304, clad	●	●	
Connections	A-A B-B C-C E-E U-U V-V	●	●	●

Gaskets material maximum temperatures

NBR	-20 °C	110 °C
EPDM Prx.	-20 °C	160 °C
FPM	-20 °C	200 °C
HNBR	-20 °C	160 °C

The temperatures must be considered not applicable in all working conditions.

Component blow-up drawings Models S300+, S450+, S700+



CERTIFICATIONS APPROVALS



- ISO 9001
Quality Management
- PED 2014/68/EU
Pressure Equipment Directive
Module B/D1 & D (up to Risk Cat. IV)



- ACS
Attestazione de Conformit  Sanitarie



- WRAS
EPDM/px gasket compound approved



- OHSAS 18001
Occupational Health and Safety



- ISO 14001
Environmental Management

MADE IN ITALY



www.cipriani-phe.com