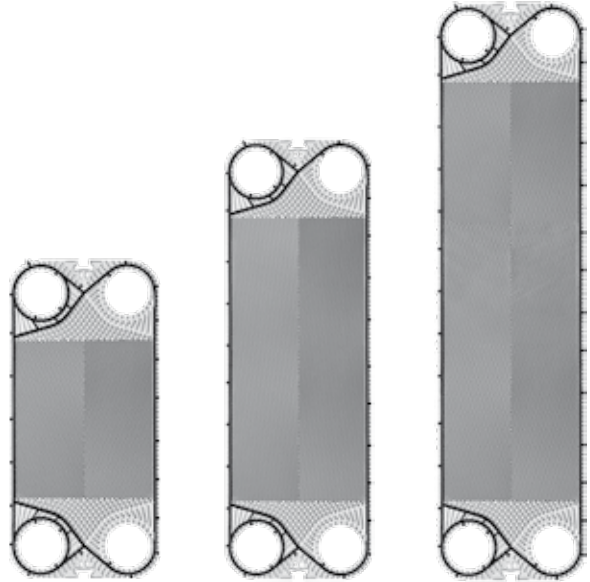


PRODUCT RANGE DN 150+

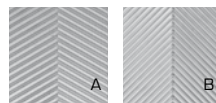
STANDARD OR CUSTOMIZED





Product Range	P400+		P600+		P900+	
Exchange area [m ²]	0,390		0,645		0,900	
Width [mm]	500		500		500	
Height [mm]	1055		1503		1951	
Connections diameter	DN150 6"		DN150 6"		DN150 6"	
Channel capacity [l]	1,122		1,659		2,197	
Tightening quote [mm]	3,1		3,1		3,1	
Plate weight (with gasket) [Kg]	1,93		2,86		3,79	
Corrugation angle	A/B		A/B		A/B	
Max. water flowrate [m ³ /h]	380		380		380	
PS=> Max working pressure [bar]	10	16	10	16	10	16

Ex art. 3.3 D.Lgs. 93 of 25/02/2000 in accordance with Directive 97/23/CE.
Announced pressures are referred to AISI 316L plates.



Plates are available in two thermal lengths (A/B)

DN32

DN50

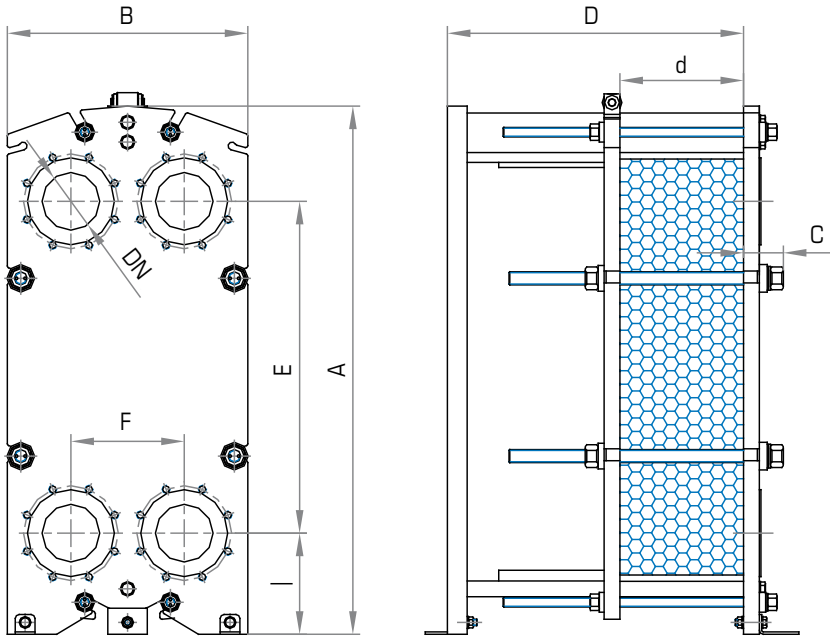
DN65

DN100

DN150

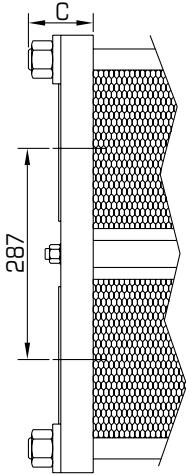
DN200

Frames dimensions



	S400+					S600+					S900+					
A	1337					1785					2272					
B	609					609					609					
E	840					1288					1736					
F	287					287					287					
I	256					256					256					
Np max	101	201	301	401	551	101	201	301	401	551	101	201	301	401	551	701
D max	750	1250	1750	2250	3050	750	1250	1750	2250	3050	750	1250	1750	2250	3050	3880
d (A-A)	3,1 x Np					3,1 x Np					3,1 x Np					
DN	DN150 6"					DN150 6"					DN150 6"					
A-A B-B C-C E-E U-U V-V	PS10		PS16			PS10		PS16			PS10		PS16			
	101		111			101		111			101		111			
A-A B-B C-C E-E	4					4					4					
U-U V-V	0					0					0					

All dimensions are in mm - Np = number of plates



A-A

Studded ports
Rubber lining
EN 1092-1.

B-B

Studded ports
AISI 316 lining
EN 1092-1.

U-U

Studded ports
Unlined
EN 1092-1.

C-C

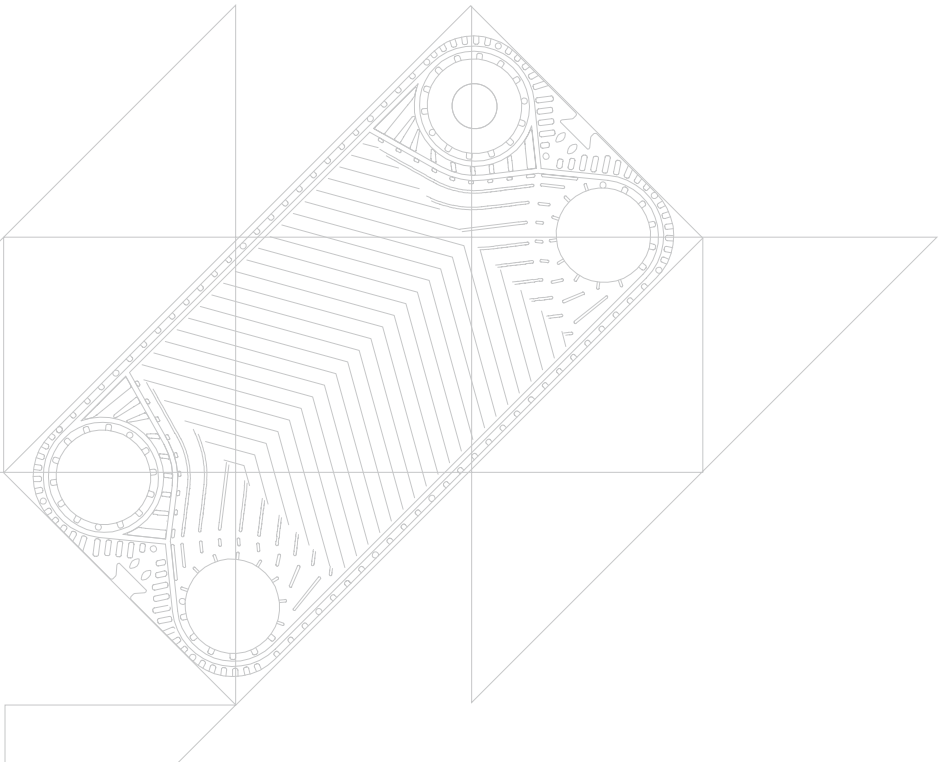
Studded ports
Rubber lining
ANSI
(metric thread).

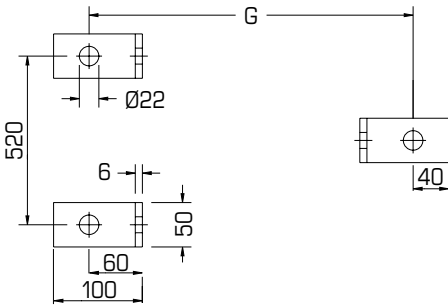
E-E

Studded ports
AISI 316 lining
ANSI
(metric thread).

V-V

Studded ports
Unlined
ANSI
(metric thread).





GxH	PS10	PS16
S400+ / S600+ / S900+		
Max 101p	866	876
Max 201p	1366	1376
Max 301p	1866	1876
Max 401p	2366	2376
Max 551p	3166	3176
GxH		
S900+		
Max 701p	3983	3983

Materials

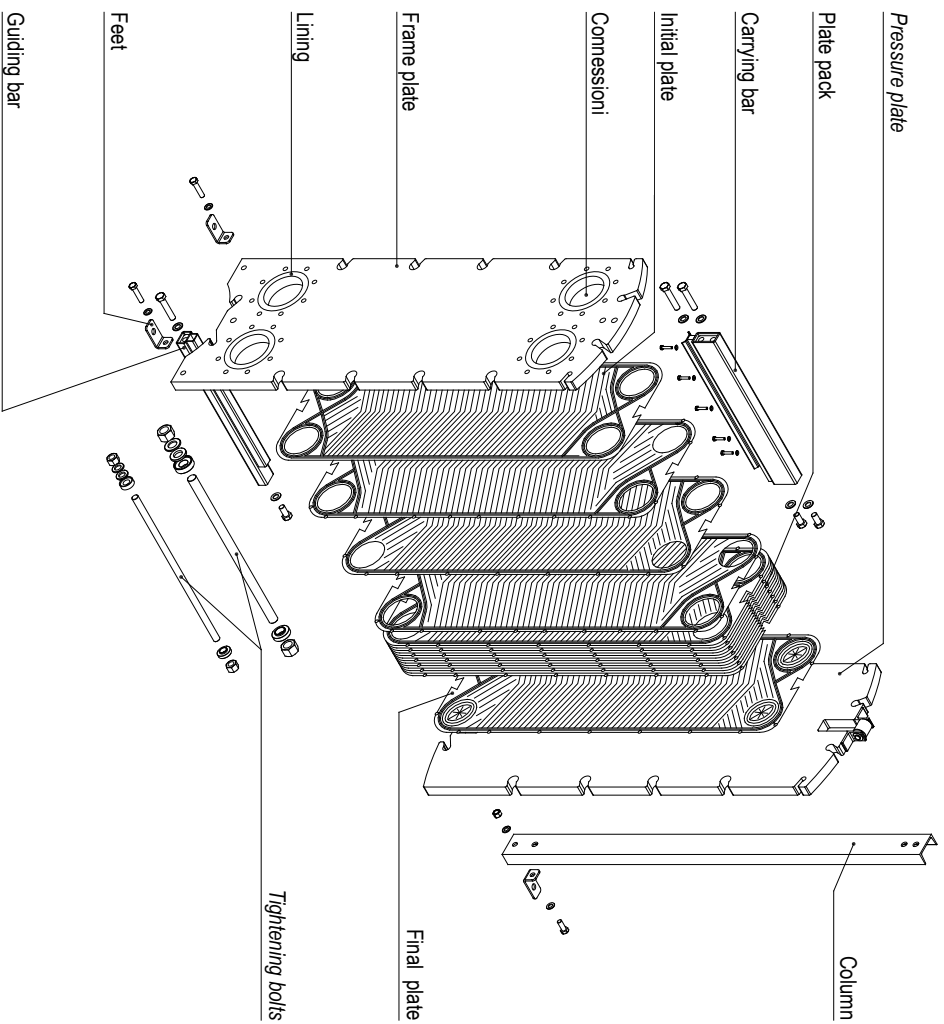
		S400+	S600+	S900+
Plates	Inox AISI 304	●	●	●
	Inox AISI 316L	●	●	●
	254 SMO	●	●	
	Titanium	●	●	
Gaskets	NBR	●	●	●
	EPDM Prx.	●	●	●
	FPM	●	●	●
	HNBR	●	●	●
Frames	Carbon steel	●	●	●
	AISI 304, clad			
Connections	A-A B-B C-C E-E U-U V-V	●	●	●

Gaskets material maximum temperatures

NBR	-20 °C	110 °C
EPDM Prx.	-20 °C	160 °C
FPM	-20 °C	200 °C
HNBR	-20 °C	160 °C

The temperatures must be considered not applicable in all working conditions.

Component blow-up drawings Models S400+, S600+, S900+



CERTIFICATIONS APPROVALS



- ISO 9001
Quality Management
- PED 2014/68/EU
Pressure Equipment Directive
Module B, D1 & D (up to Risk Cat. IV)



- ACS
Attestation de Conformité Sanitaire



- WRAS
EPDM/px gasket compound approved



- OHSAS 18001
Occupational Health and Safety



- ISO 14001
Environmental Management

MADE IN ITALY

