

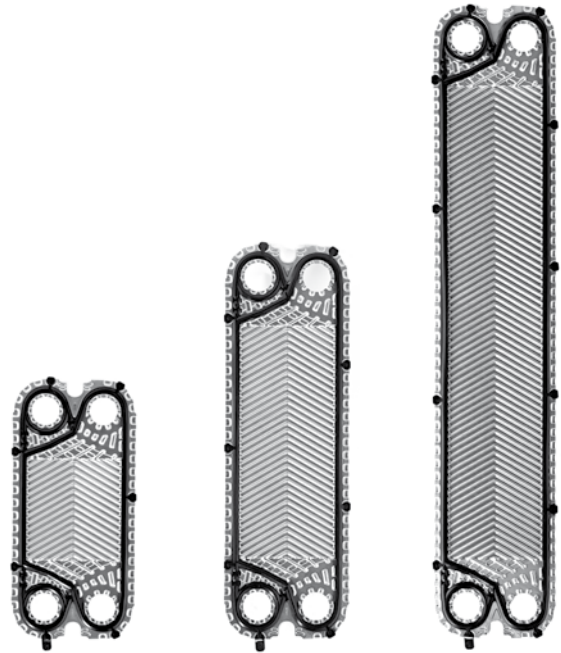


PRODUCT RANGE DN 32+

STANDARD OR CUSTOMIZED



www.cipriani-phe.com



Product Range	P020+				P040+				P080+			
Exchange area [m ²]	0,021				0,041				0,081			
Width [mm]	145				145				145			
Height [mm]	305				455				740			
Connections diameter	DN32 1"1/4				DN32 1"1/4				DN32 1"1/4			
Channel capacity [l]	0,063				0,103				0,181			
Tightening quote [mm]	2,9				2,9				2,9			
Plate weight (with gasket) [Kg]	0,18				0,27				0,45			
Corrugation angle	A				A				A			
Max. water flowrate [m ³ /h]	19				19				19			
PS=> Max working pressure [bar]	6	10	16	25	6	10	16	25	6	10	16	25

Ex art. 3.3 D.Lgs. 93 of 25/02/2000 in accordance with Directive 97/23/CE.
Announced pressions are referred to AISI 316L plates.

DN32

DN50

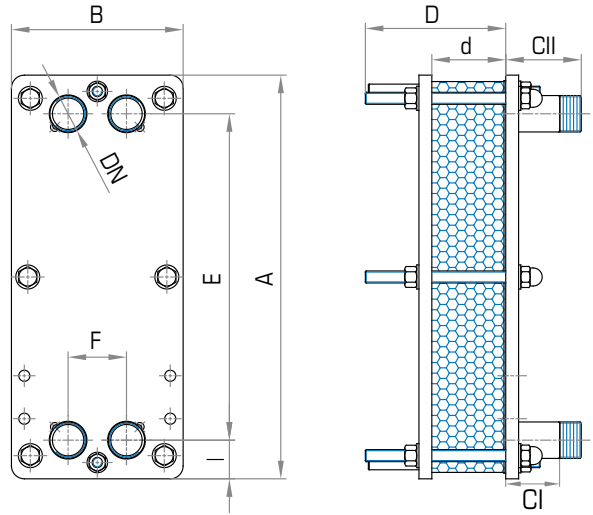
DN65

DN100

DN150

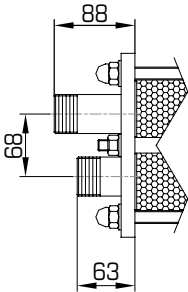
DN200

Frames dimensions



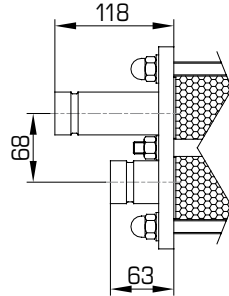
		S020+			S040+			S080+			
A		320			470			755			
B		200			200			200			
E		230			380			665			
F		68			68			68			
I		45			45			45			
Np max		29	49	75	29	49	75	29	49	75	101
D max		169	269	469	169	269	469	169	269	469	580
d (J-J)		2,9 x Np+2			2,9 x Np+2			2,9 x Np+2			
DN		DN32 1"1/4			DN32 1"1/4			DN32 1"1/4			
J-J	C I	63			63			63			
	C II	88			88			88			
M-M	C	73			73			73			
J-M	C I	59			59			59			
	C II	73			73			73			
Y-Y	C I	63			63			63			
	C II	118			118			118			
X-X K-K	C I	180			180			180			
	C II	176			176			176			

All dimensions are in mm - Np = number of plates



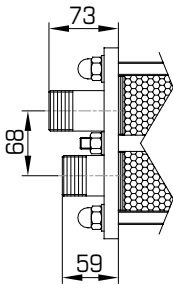
J-J

AISI 316 male threaded connections.



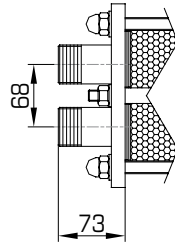
Y-Y

AISI 316 grooved pipe connections.



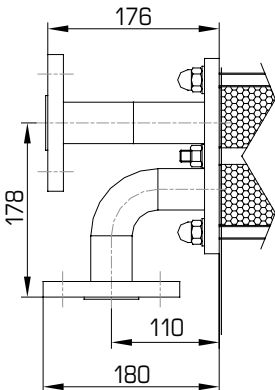
J-M

AISI 316 and PP male threaded connections.



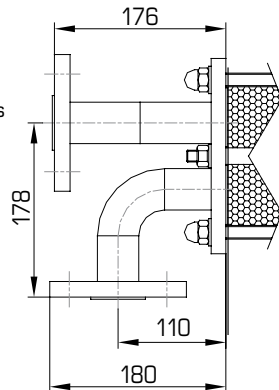
M-M

PP male threaded connections.



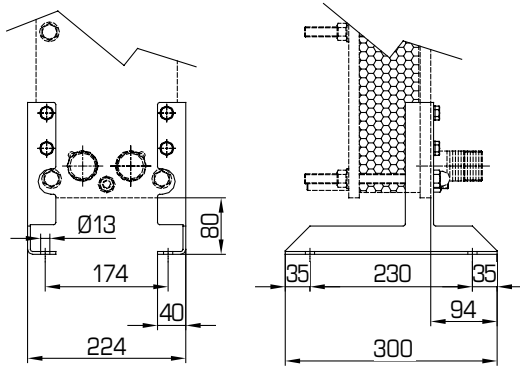
X-X

AISI 316 pipes with AISI 304 loose flanges EN 1092-1.



K-K

AISI 316 pipes with painted carbon steel loose flanges EN 1092-1.



Materials

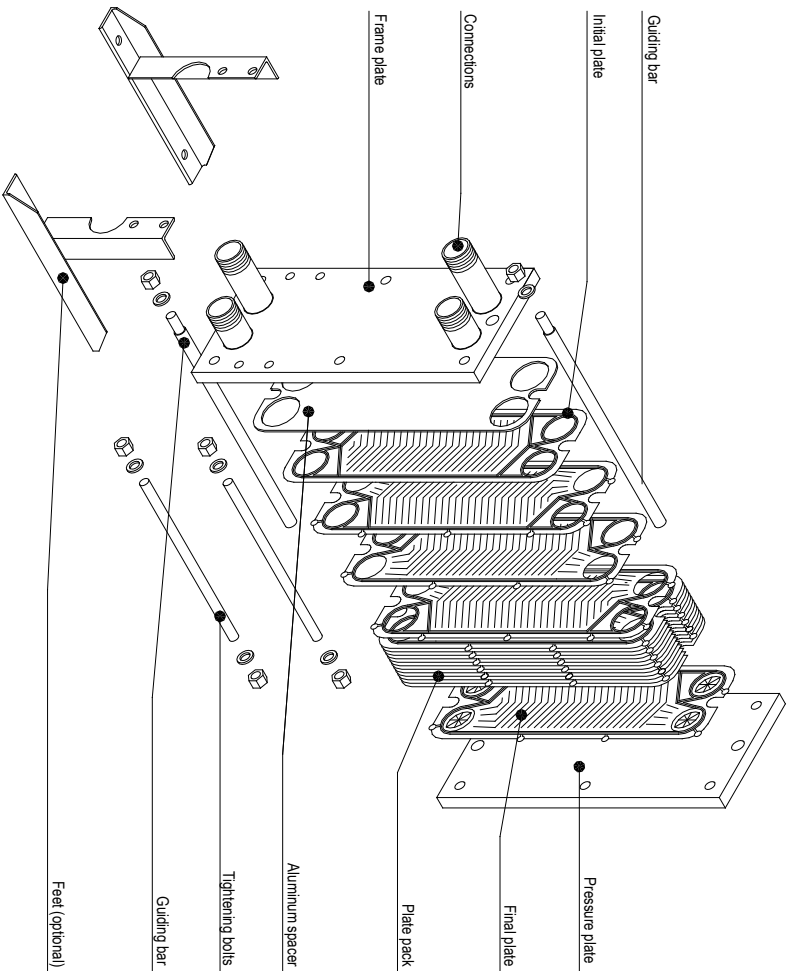
		S020+	S040+	S080+
Plates	AISI 304	●	●	●
	AISI 316L	●	●	●
	254 SMO	●	●	●
	Titanium	●	●	●
Gaskets	NBR	●	●	●
	EPDM Prx.	●	●	●
	FPM	●	●	●
	HNBR	●	●	●
Frames	Carbon steel	●	●	●
	AISI 304, solid		●	●
Connections	J-J	●	●	●
	Y-Y	●	●	●
	J-M	●	●	●
	M-M	●	●	●
	X-X	●	●	●
	K-K	●	●	●

Gaskets material maximum temperatures

NBR	-20 °C	110 °C
EPDM Prx.	-20 °C	160 °C
FPM	-20 °C	200 °C
HNBR	-20 °C	160 °C

The temperatures must be considered not applicable in all working conditions

Component blow-up drawings Models SO20+, SO40+, SO80+



CERTIFICATIONS APPROVALS



- ISO 9001
Quality Management
- PED 2014/68/EU
Pressure Equipment Directive
Module B-D1 & D (up to Risk Cat. IV)



- ACS
Attestation de Conformité Sanitaire



- WRAS
EPDM/px gasket compound approved



- OHSAS 18001
Occupational Health and Safety



- ISO 14001
Environmental Management

MADE IN ITALY



www.cipriani-phe.com